

### Simple, Manageable and Completely Secure

Today's distributed mobile workforce requires secure, remote access to corporate network resources. Network security administrators need a VPN client solution that is simple to deploy, manageable and completely secure. NETGEAR's ProSafe VPN Client software delivers the ideal solution, with robust encryption and broad support across multiple connection types and Microsoft<sup>®</sup> Windows<sup>®</sup> operating platforms. The ProSafe VPN client provides easy setup and seamless compatibility with the full line of NETGEAR VPN/Firewall Routers as well as compatibility with IPsec VPN solutions from other leading manufacturers. With the NETGEAR ProSafe VPN client, NETGEAR extends its line of cost-effective security offerings, providing a single vendor solution for growing businesses.

#### Robust Security

Supports a wide range of security protocols and authentication methods, including Advanced Encryption Standard (AES), Data Encryption Standard (DES), 3DES, Message-Digest Algorithm (MD5) and Secure Hash Algorithm (SHA-1). Also supports Public-Key Infrastructure (PKI) and Internet Key Exchange (IKE - main and aggressive modes), plus a wide range of Smart Cards and certificate authorities.

#### Extensive Compatibility

Provides protected access to corporate resources via wireless, broadband, and dial-up connections. Supports NETGEAR VPN/Firewall routers, including the FVS318, FVG318, DGFV338, SRXN3205, FVS338, FVS336G, and FVX538, as well as many other IPsec-compliant VPN devices. Enables client-initiated VPNs from Windows<sup>®</sup> 98, Me, Vista, XP, 2000, and Windows NT-based PCs.

#### Ease of Use

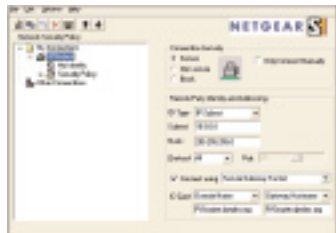
NETGEAR provides pre-configuration files for NETGEAR ProSafe VPN/Firewall Routers to minimize setup and support costs of the ProSafe VPN client software. NETGEAR's ProSafe VPN client allows you to configure security policies and manage certificates through its Windows-based graphical user interface, and to create and distribute customized installations for easy setup of end users. The ProSafe VPN client includes several modules that make it easy to configure and diagnose connection problems:

- Certificate Manager facilitates digital certificate enrollment for online or manual enrollment.
- Security Policy Editor enables configuration of a security policy connection-by-connection.
- Connection Monitor displays statistical and diagnostic information for each active connection.
- Log Viewer lists the IKE negotiations that occur as secure connections are established.

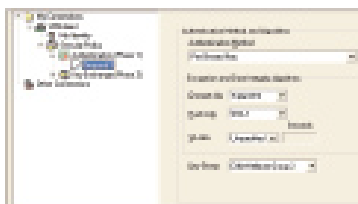


## Advanced Functionality

Includes Network Address Translation (NAT) traversal support for VPN clients behind devices that support VPN pass-through mode. Supports multiple configurations, including split tunneling, block tunneling, and central tunneling. Provides redundant gateway capability and keepalives for increased reliability.



Connection Settings



Authentication Encryption Settings



Data Encryption Settings

## Technical Specifications

### • Encryption

- 168-bit Triple Data Encryption Standard (3DES) and 56-bit Data Encryption Standard (DES)
- Message-digest Algorithm (MD5) or Secure Hash Algorithm (SHA-1)
- Advanced Encryption Standard (AES) (128-, 192-, and 256-bit)

### • PKI

- X.509 certificate authority\*
- Smart Card support\*\*
- PKCS #7 certificate chains
- PKCS #10 certificate requests
- PKCS #12 certificate import
- MSCAPI support

### • Diffie-Helman Group Support

- Group 1-MODP 768, Group 2 – MODP 1024, Group 5 – MODP 1536

### • Authentication Mechanisms

- Pre-shared keys, RSA signatures

### • Key Management

- IKE (Internet Key Exchange)

### • IPsec Modes

- Tunnel, transport

### • IKE Modes

- Main, aggressive, quick

### • Compression

- IPComp – Deflate and plug-in support for LZS

### • Additional Security Features

- NAT Traversal, LDAP directory support, centralized policy management, self-signed certificate support, XAUTH support, L2TP protocol support, redundant gateways, IKE keepalives, audit log, split, block and central tunneling

## System Requirements

- Pentium® Class (or equivalent processor) PC
- Microsoft® Windows® Vista, 98, Me, Windows NT 4.0, Windows 2000, Windows XP® operating system
- 16 MB RAM for Windows 98
- 32 MB RAM for NT
- 64 MB RAM for XP, Vista, Me and 2000
- 35 MB hard disk space

## Package Contents

- ProSafe VPN Client Software CD in 1-user (VPN01L) or 5-user (VPN05L) license packs
- Installation guide (on disk)
- ProSafe VPN Easy Configuration Files
- Warranty/support information card

## NETGEAR Related Products

- FVS318 ProSafe VPN Firewall with 8-port Switch
- FVG318 ProSafe Wireless VPN Firewall 8
- DGFV338 ProSafe 802.11g Wireless ADSL Modem VPN Firewall Router
- SRXN3205 ProSafe Wireless-N VPN Firewall
- FVS338 ProSafe VPN Firewall with 8-port Switch
- FVS336G ProSafe Dual WAN Gigabit Firewall
- FVX538 ProSafe Dual WAN VPN Firewall with 8-port Switch

### • Warranty

- NETGEAR 90-day Warranty

# NETGEAR®

350 East Plumeria Drive  
San Jose, CA 95134 USA  
1-888-NETGEAR (638-4327)  
E-mail: info@NETGEAR.com  
www.NETGEAR.com

© 2008 NETGEAR, Inc. NETGEAR, the NETGEAR Logo, NETGEAR Digital Entertainer Logo, Connect with Innovation, FrontView, IntelliFi, PowerShift, ProSafe, RAIDar, RAIDiator, X-RAID, RangeMax, ReadyNAS and Smart Wizard are trademarks of NETGEAR, Inc. in the United States and/or other countries. Other brand names mentioned herein are for identification purposes only and may be trademarks of their respective holder(s). Information is subject to change without notice. All rights reserved.

\*Free basic installation support provided for 90 days from date of purchase. Advanced product features and configurations are not included in free basic installation support; optional premium support available.

\*\*Actual performance may vary due to operating conditions