

**NIGHTHAWK®**

Nighthawk® AX 5-Stream WiFi 6 Router



## Ready for the WiFi of Everything

Upgrade to true high-performance WiFi with the NETGEAR® Nighthawk® AX WiFi 6 Router. With a powerful 1.5GHz triple-core processor, it delivers blazing-fast Internet speeds and reliable connectivity to every device in your network, allowing you to stream picture-perfect 4K UHD content to smart TVs, mobile devices, and gaming

consoles with up to 2.4Gbps<sup>†</sup> wireless speeds. And three high-power antennas will extend your wireless range for maximum coverage. Every feature on the Nighthawk® AX WiFi 6 Router is designed to improve your WiFi experience. Access to the latest WiFi 6 technology gives you up to 4X the WiFi capacity. One USB

3.0 port delivers quick backup as well as easy access to your stored media. With NETGEAR Armor™, you get multi-layered cybersecurity for an unlimited number of devices that provides encrypted connections, keeps your online activity private, secures lost or stolen devices, and blocks suspicious devices on your network.

**NETGEAR®**

NIGHTHAWK®

## Nighthawk® AX 5-Stream WiFi 6 Router



### WiFi 6—Ready for Today and Tomorrow's Smart Home

Delivering four times better performance than AC WiFi, WiFi 6 allows more devices to connect and stream simultaneously, without impacting speed or reliability, by efficiently packing and scheduling data. Rising to the challenges of modern smart home demands, this new standard of WiFi is ready to support more devices with better reliability and faster speeds.

#### Capacity

WiFi 6 gives you improved network capacity for more WiFi devices. Have more fun with the uninterrupted 4K streaming, gaming, and the smart home experience.

#### Speed

Get ultra-fast wireless speeds with more connections for all devices with less congestion. You'll get some blazing connection speeds of more than one gigabit per second or more, 4K streaming, & VR/AR gaming.

#### Range

Experience reliable and stronger WiFi coverage indoors and outdoors for all your devices. High-performance antennas, pre-optimized for best performance, on the router amplify WiFi signals for maximized range and reliable coverage.

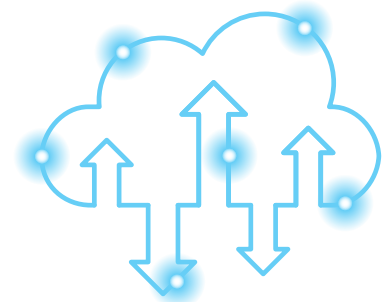
### 3 High-power Antennas

Extend wireless range for better coverage for reliable whole home WiFi.



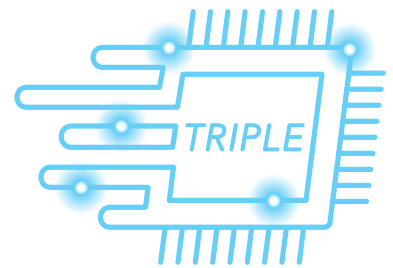
### Faster WiFi Speeds

Efficient data transmission to your WiFi devices simultaneously for smoother streaming and faster speeds.



### Powerful 1.5GHz Triple-core Processor

More processing power to manage your smart home connectivity and smooth 4K UHD streaming to your mobile devices and gaming consoles.



## Speed

Get ultra-fast wireless speeds for better 4K UHD streaming, gaming or video conferencing experience.



UP TO 2.4GBPS<sup>†††</sup> SPEEDS—600+1800Mbps



1024-QAM—25% increased data efficiency and faster speeds than a 256-QAM router



5 GIGABIT PORTS—Connect more wired devices for faster file transfer and uninterrupted connections

## Capacity

Get better performance for all your smart home devices even when your family is busy streaming videos or uploading media files during the Internet rush hour.



MORE WIFI FOR MORE DEVICES— Allows efficient data transmission to devices simultaneously.<sup>§</sup>



POWERFUL PROCESSOR—1.5GHz triple-core processor ensures smooth 4K UHD streaming

## WiFi Range

Faster and expanded coverage throughout your home and for all your devices.



ULTIMATE RANGE—WiFi coverage throughout small to medium homes



HIGH-PERFORMANCE ANTENNAS—Three (3) external antennas extend strong and reliable WiFi signals over larger area

## Sharing

With NETGEAR, sharing across your network is fun and easy, such as accessing stored photos & music.



4 GIGABIT ETHERNET LAN PORTS—Connect more wired devices for faster file transfer and uninterrupted connections



READYSHARE® USB ACCESS—Wirelessly access & share USB hard drive via one USB port

## Reliable Connections

There's nothing more frustrating than lost connections! With NETGEAR's advanced features & best-in-class technology, you'll reduce interference & enjoy more reliable WiFi connectivity.



BEAMFORMING+—Improve range and performance for both 2.4 and 5GHz devices



SIMULTANEOUS DUAL BAND WIFI—Supports two WiFi bands simultaneously to double the available bandwidth and provide a reliable, dedicated WiFi network for smooth online gaming without any network congestion

## Ease of Use

Start enjoying your new device faster than ever. NETGEAR wants to make sure installation and management is simple & easy, so you can connect quickly & make sure you stay that way!



NIGHTHAWK® APP—Easily set up your router and get more out of your WiFi. Includes access from anywhere to manage your network away from home



AX WIFI SUPPORTS ALL CURRENT WIFI DEVICES—WiFi 6 supports all current WiFi device and is backward compatible with WiFi 5 and earlier generation devices



VOICE CONTROLLED BY AMAZON ALEXA® & THE GOOGLE ASSISTANT™—Control your NETGEAR WiFi network with simple voice commands



## Security

Maintain high security across your network to ensure your privacy & family is safe while online. Whether it's preventing phishing & spyware or just limiting access for kids & guests, NETGEAR has you covered.



**NETGEAR ARMOR™**—Cybersecurity for your home††. Advanced cyber threat protection for your home network and your connected devices



**VPN SUPPORT**—On PC, MAC, & now also with OpenVPN Connect app on iOS & Android, securely access your home network & Internet connection from your mobile device remotely



**STANDARDS-BASED WIFI SECURITY** (802.11i, 128-bit AES encryption with PSK)



**GUEST NETWORK**—Separate and secure network for your guests



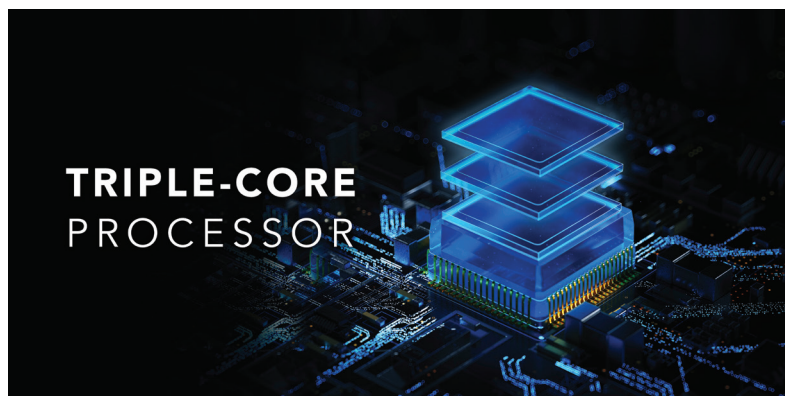
**AUTOMATIC FIRMWARE UPDATE**—Delivers latest security patches to the router



**LATEST SECURITY STANDARD**—Supports WPA3 the latest and cutting-edge WiFi security protocol

## Powerful Triple-core Processor

Nighthawk AX WiFi 6 Router is powered by a powerful triple-core processor designed to transfer Multi-Gigs of data. Full-packet processing offload means zero load on the CPU. Enjoy smoother Ultra-HD 4K video streaming and gaming without interruptions.



# NIGHTHAWK®

## Nighthawk® AX 5-Stream WiFi 6 Router

### Nighthawk App

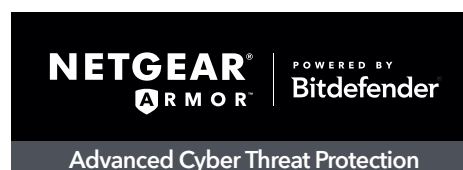
The NETGEAR Nighthawk® App makes it easy to set up your router and get more out of your WiFi. With the app, you can install your router in a few steps—just connect your mobile device to the router network and the app will walk you through the rest. Once set up, you can use the intuitive dashboard to pause the Internet on your connected devices, run a quick Internet speed test, and much more!

- Anywhere Access—Easily monitor your home network anytime, anywhere
- Internet Speed Test—Check the broadband speeds from your service provider
- Pause Internet—Pause the Internet to any device
- Traffic Meter—Track Internet data usage
- Guest Networks—Set up separate WiFi access for guests
- Quick Setup—Get connected in just minutes
- Get it at [nighthawk-app.com](https://nighthawk-app.com)




### NETGEAR Armor™


NETGEAR Armor empowers you to eliminate vulnerabilities or simply know the status of your home network and devices, anytime, anywhere. Get instant notifications when malicious threats are detected, block unknown devices from joining your home network or take action on vulnerabilities as they are discovered easily through the Nighthawk App.




### Powerful Security on Your NETGEAR Router

 **ANTIVIRUS & RANSOMWARE PROTECTION**—Keeps you safe from phishing and online fraud

 **VULNERABILITY ASSESSMENT**—Scans and identifies network security flaws

 **BITDEFENDER SECURITY**—Protects all connected devices at home and on-the-go

 **BITDEFENDER VPN**—Encrypts your internet connection to keep your online activity private even while you're on unsecured public networks

 **STAY SAFE EVEN WHEN AWAY FROM HOME WIFI**—Stay in the know with Nighthawk App. Anywhere, anytime

## Connection Diagram





# NIGHTHAWK®

# Nighthawk® AX 5-Stream WiFi 6 Router

## Package Contents

- NETGEAR® Nighthawk® AX/5-stream AX2400 WiFi 6 Router (RAX30)
- Ethernet cable
- Quick start guide
- Power adapter

## Physical Specifications

- Dimensions: 7.97 x 9.32 x 6.23in (202 x 237 x 158mm)
- Weight: 1.03 lb (465 g)

## Standards

- WiFi 6 (802.11ax) Dual Band WiFi (AX2400)
  - 2.4G: 600Mbps, 40/20MHz 1024/256-QAM
  - 5G: 1800Mbps, 80/40/20MHz 1024-QAM
  - Backwards compatible with 802.11a/b/g/n/ac WiFi
- Five (5) 10/100/1000Mbps—(1 WAN & 4 LAN) Gigabit Ethernet ports
- One (1) 3.0 USB port

## Technical Specifications

- WiFi 6 (802.11ax) dual band WiFi (AX2400)
  - 2.4G: 600Mbps, 40/20MHz 1024/256-QAM
  - 5G: 1800Mbps, 80/40/20MHz 1024-QAM
  - Backwards compatible with 802.11a/b/g/n/ac WiFi
- 1024-QAM—25% data efficiency and faster speeds than a 256-QAM router
- Powerful 1.5GHz triple-core processor
- Longer range with 3 high-performance antennas

## Key Features

- 2X better performance than an AC router—WiFi with up to 2.4Gbps† for ultra-fast wireless speeds\*\*
- Powerful processor—Triple-core processor ensures smooth 4K UHD streaming & gaming
- 4 Gigabit Ethernet LAN ports—Connect more wired devices for faster file transfer and uninterrupted connections
- Nighthawk® App—Easily set up your router and get more out of your WiFi. Includes access from anywhere to manage your network away from home
- WiFi 6 supports all current WiFi devices and is backwards compatible with WiFi 5 and earlier generation devices
- NETGEAR Armor™—Advanced cyber threat protection for your home network and your connected devices††
- Works with Amazon Alexa® & the Google Assistant—Control your NETGEAR WiFi network with simple voice commands

## System Requirements

- Microsoft® Windows 7, 8, 10, Vista®, XP®, 2000, Mac OS®, UNIX®, or Linux®
- Microsoft® Internet Explorer® 11 or higher, Microsoft Edge®, Google Chrome® 55 or higher, Firefox® 45 or higher, Safari® 10 or higher

## Security

- Standards-based WiFi Security (802.11i, 128-bit AES encryption with PSK)
- Automatic firmware update delivers latest security patches to the router
- VPN Support—Secure access to your home network away from home

- Supports WPA3, the latest and cutting-edge WiFi security protocol
- NETGEAR Armor™—Advanced cyber threat protection for your home network and your connected devices††

## Warranty

- [www.netgear.com/warranty](http://www.netgear.com/warranty)
- Extend your warranty & technical support within 90 days of product purchase [US only]. Visit: [prosupport.netgear.com/home](http://prosupport.netgear.com/home)

## Support

- 90-day complimentary technical support following purchase from a NETGEAR authorized reseller
- Join the NETGEAR Community Forum. Visit <http://community.netgear.com>

This product comes with a limited warranty that is valid only if purchased from a NETGEAR authorized reseller.

\* 90-day complimentary technical support following purchase from a NETGEAR authorized reseller.

† Performance compared to IEEE® 802.11ac wireless technology.

†† Maximum wireless signal rate derived from IEEE 802.11 specifications. Actual data throughput and wireless coverage will vary and may be lowered by network, your country's regulation, and environmental conditions, including network traffic volume and building construction. NETGEAR makes no representations or warranties about this product's compatibility with AX standards. Up to 2400Mbps wireless speeds achieved when connecting to other 802.11ax 2400Mbps devices.

††† NETGEAR Armor requires a paid subscription after the initial 30-day free trial. (No credit card required for the trial). Visit [netgear.com/armor](http://netgear.com/armor)

§ Requires compatible AX clients with DL-OFDMA and UL-OFDMA support.

For indoor use only.

NETGEAR, the NETGEAR Logo, NETGEAR Armor and Nighthawk are trademarks of NETGEAR, Inc. Mac, Mac OS and the Mac logo are trademarks of Apple Inc. Google Play and the Google Play logo are trademarks of Google LLC. Any other trademarks mentioned herein are for reference purposes only. ©2021 NETGEAR, Inc.

NETGEAR, Inc. 350 E. Plumeria Drive, San Jose, CA 95134-1911 USA, [www.NETGEAR.com/support](http://www.NETGEAR.com/support)

D-RAX30-1

